

Sheriff



Monroe County Sheriff's Office

Robert P. Peryam, Sheriff

5525 College Road

Key West, Florida 33040

(305) 292-7000 FAX: (305) 292-7070 1-800-273-COPS

www.keyssso.net

SUBSTATIONS

Freeman Substation
20950 Overseas Hwy.
Cudjoe Key, FL 33042
(305) 745-3184
FAX (305) 745-3761

Marathon Substation
3103 Overseas Hwy.
Marathon, FL 33050
(305) 289-2430
FAX (305) 289-2497

Islamorada Substation
87000 Overseas Hwy.
Islamorada, FL 33036
(305) 853-7021
FAX (305) 853-9372

Roth Building
50 High Point Road
Tavernier, FL 33070
(305) 853-3211
FAX (305) 853-3205

DETENTION CENTERS

Key West Det. Center
5501 College Road
Key West, FL 33040
(305) 293-7300
FAX (305) 293-7353

Marathon Det. Facility
3981 Ocean Terrace
Marathon, FL 33050
(305) 289-2420
FAX (305) 289-2424

Plantation Det. Facility
53 High Point Road
Plantation Key, FL 33070
(305) 853-3266
FAX (305) 853-3270

SPECIAL OPERATIONS

P.O. Box 500975
Marathon, FL 33050
(305) 289-2410
FAX (305) 289-2498

AVIATION DIVISION

10100 Overseas Hwy.
Marathon, FL 33050
(305) 289-2777
FAX (305) 289-2776

COMMUNICATIONS

2796 Overseas Hwy.
Marathon, FL 33050
(305) 289-2351
FAX (305) 289-2493

February 2, 2010

SHERIFF'S OFFICE CIVIL DIVISION ANNOUNCES NEW EVICION SUMMON AND WRIT OF POSSESSION POLICY

Effective immediately the CIVIL DIVISION of the Monroe County Sheriff's Office will accept only eviction summons and writs of possessions that have a property record view along with a parcel map with photo from the Monroe County Property Appraisers Office. You can find this information on line at www.mcpafl.org or go into your local Property Appraisers Office. If the information is not attached the paperwork will be returned to the person requesting service.

Thank you for your cooperation.

Any further questions or inquiries may be directed to:

Rachelle Gates
Civil Process Supervisor
Monroe County Sheriff's Office
5525 College Rd
Key West, Fl 33040
Ph# 305-809-3041



Ervin A. Higgs, CFA
Property Appraiser
Monroe County, Florida

office (305) 292-3420
 fax (305) 292-3501

Property Record View

Alternate Key: 1590461 Parcel ID: 00481260-000000

Ownership Details

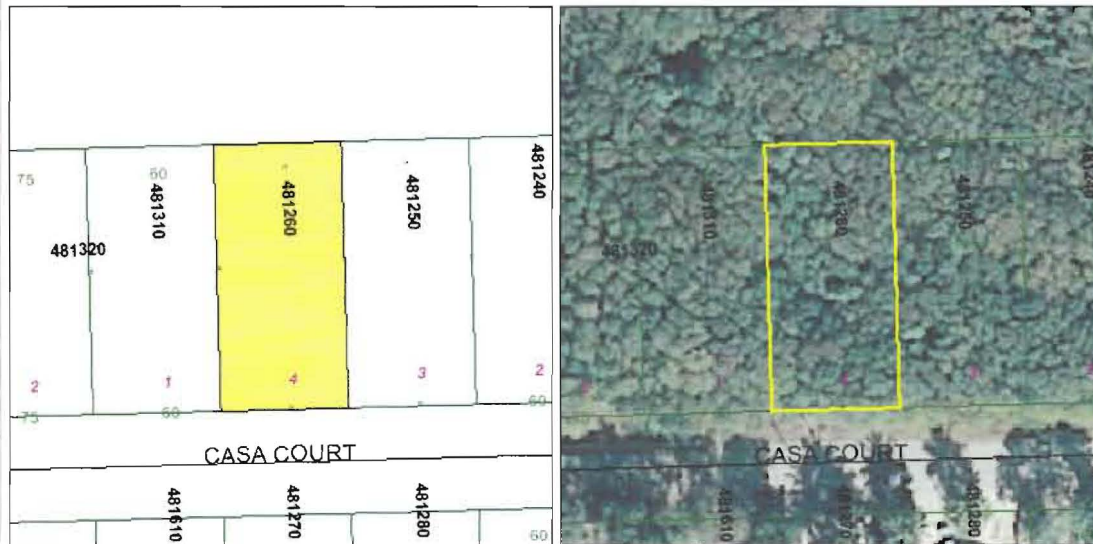
Mailing Address:
 MONROE COUNTY COMPREHENSIVE PLAN LAND AUTHORITY
 1200 TRUMAN AVE
 STE 207
 KEY WEST, FL 33040-7270

EXAMPLE

Property Details

PC Code: 86 - COUNTIES OTHER THAN (PC/LIST)
 Millage Group: 500P
 Affordable Housing: No
 Section-Township-Range: 14-62-38
 Property Location: KEY LARGO
 Subdivision: ADOBE CASA COURT
 Legal Description: BK A LT 4 ADOBE CASA COURT KEY LARGO PB5-17 OR619-415/417 OR788-854/855 OR791-986/987 OR821-218 OR844- 1321Q/C OR844-1324 OR933-1603Q/C OR942-1880AFF OR982-2238 OR1714-1167/68

Parcel Map



Exemptions

Exemption	Amount
21 - MISC/MC COMP PLAN	31,994.00

Land Details

Land Use Code	Frontage	Depth	Land Area
8600 - COUNTY	60	125	7,528.00 SF

Building Summary

Number of Buildings: 0
 Number of Commercial Buildings: 0
 Total Living Area: 0